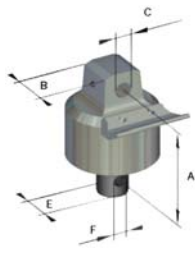


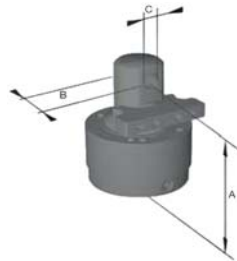


ROZZI ROTATORLAR

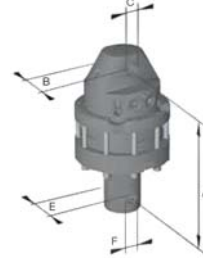
MODEL		R 04	R 05	R 102	R 104A	R 104F	R 105A	R 105F
Maksimum Eksenel Yük	<i>ton</i>	2,5	3	2	3	3	4	4
Rotator Ağırlığı	<i>Kg</i>	25	31	25	40	46	53	60
Dönme Açısı	<i>Derece</i>	290°	Cont.	Cont.	Cont.	Cont.	Cont.	Cont.
Maksimum Tork	<i>daNm</i>	180	104	100	140	140	180	180
Maksimum Döndürme Basıncı	<i>bar</i>	200	200	250	250	250	250	250
Maksimum Kavrama Basıncı	<i>bar</i>	—	300	300	300	300	300	300
Yağ Akış Hacmi	<i>cm³/g</i>	—	450	140	210	210	300	300
ROTATOR ÖLÇÜLERİ	<i>A</i>	220	232	275	320	300	341	319
	<i>B</i>	80	84	80	80	80	80	80
	<i>C</i>	33	33	26	33	33	33	33
	<i>E</i>	60	—	59	79	—	85	—
	<i>F</i>	26	—	26	26		30	



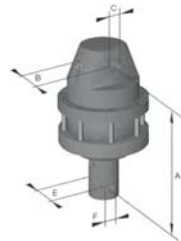
R 04



R 05



R 102



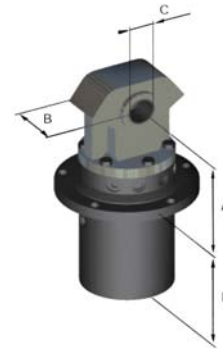
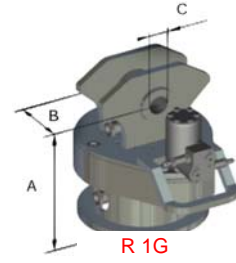
R 104A - R 105A



R 104F - R 105F

ROZZI ROTATORLAR

MODEL		R 1G	R 3	R 3B	R 3C
Maksimum Eksenel Yük	<i>ton</i>	5	5	8	15
Rotator Ağırlığı	<i>Kg</i>	100	93	153	252
Dönme Açısı	<i>Derece</i>	Cont.	Cont.	Cont.	Cont.
Maksimum Tork	<i>daNm</i>	120	120	240	240
Maksimum Döndürme Basıncı	<i>bar</i>	70	200	200	200
Maksimum Kavrama Basıncı	<i>bar</i>	300	300	300	300
Yağ Akış Hacmi	<i>cm³/g</i>	1360	500	1000	1000
ROTATOR	<i>A</i>	340	250	284	305
	<i>B</i>	148	120	150	150
ÖLÇÜLERİ	<i>C</i>	50	50	70	70
	<i>E</i>	—	246	290	312



MODEL		R 2	R 2A	R 2G	R 2C
Maksimum Eksenel Yük	<i>ton</i>	6	8	8	15
Rotator Ağırlığı	<i>Kg</i>	71	114	97	224
Maksimum Kavrama Basıncı	<i>bar</i>	300	300	300	300
ROTATOR	<i>A</i>	400	461	350	504
	<i>B</i>	118	118	182	150
ÖLÇÜLERİ	<i>C</i>	50	50	60	70
	<i>E</i>	110	125	—	—
	<i>F</i>	36	45	—	—

